

F D  
DESIGN

FRANCO DONZELLO - ARCHITETTO

Via Carducci n.6, 97014 Ispica, tel. 331.8090090 Pec: donzello.franco@archiworldpec.it - email: archdonzello@gmail.com

F D  
DESIGN

## COMUNE DI POZZALLO

Libero Consorzio Comunale di Ragusa

PROGETTO DI UN PIANO DI LOTTIZZAZIONE IN UN  
AREA SITA IN C.DA PALMENTI VECCHI (ex Feudo Scaro)  
IN AREA CT SOTTOZONA CT1 DEL P.R.G.  
IN CATASTO AL FOGLIO 9  
P.LLE 93-95-222-674-675-676-482-88-89-90  
196-199-479-926-380-86

Tav. 15

PARTICOLARI PROGETTO  
FOGNATURA

Scala 1:500

Ditte: Distefano Marco - Distefano Silvana - Saija Pietro  
Campanella Carmelo - Macauda Rosa  
Cataudella Giorgio - Mattioli Santa

IL PROGETTISTA  
ARCH. FRANCO DONZELLO

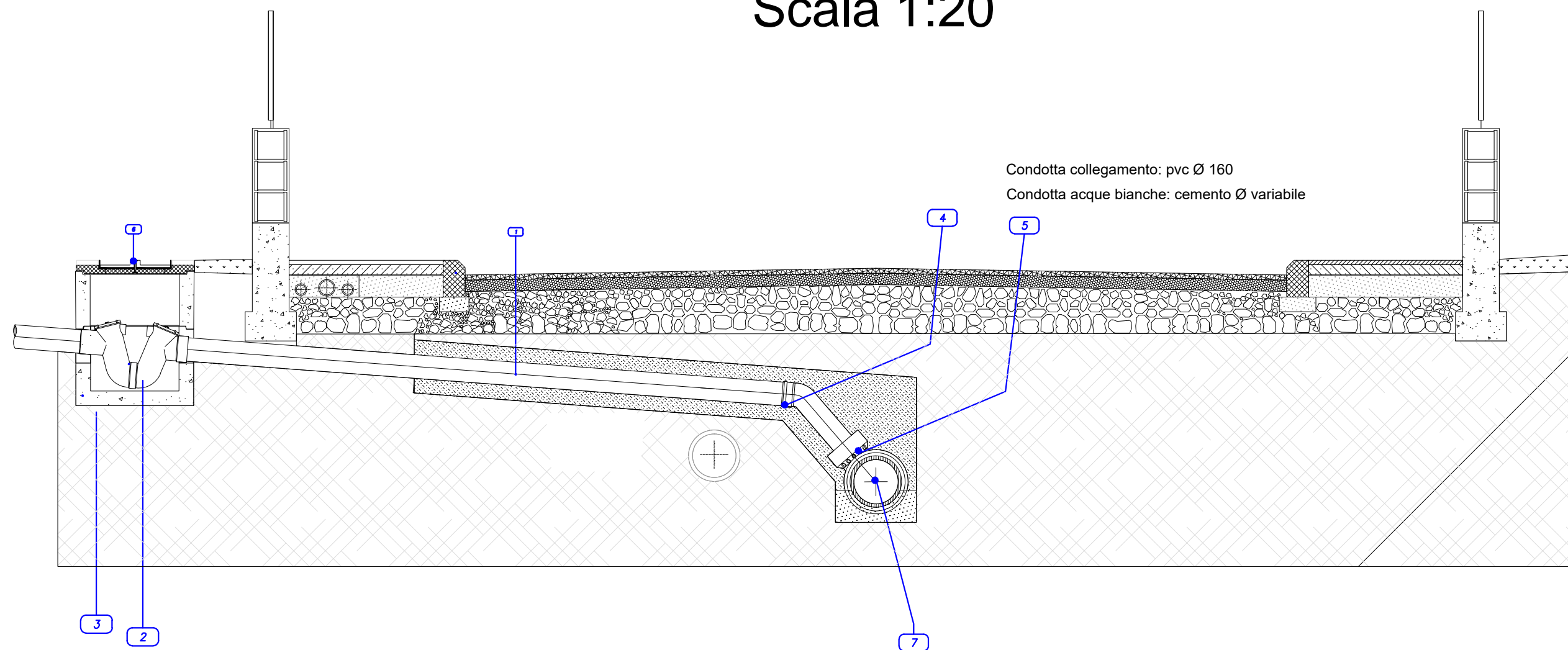


### LEGENDA

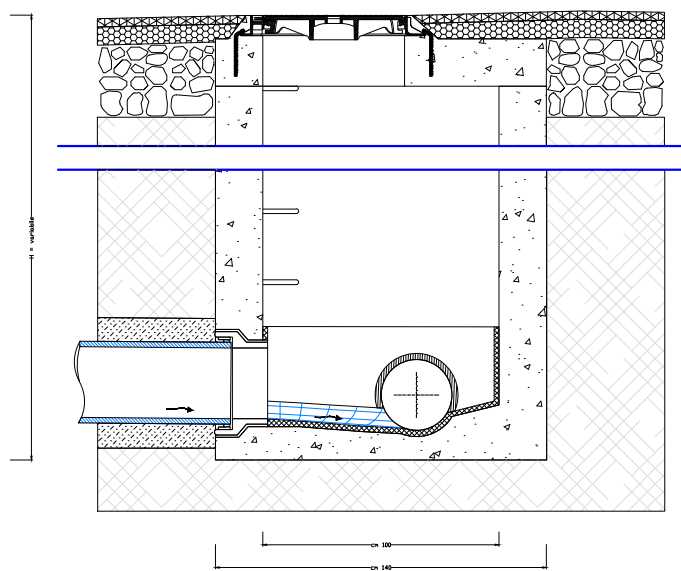
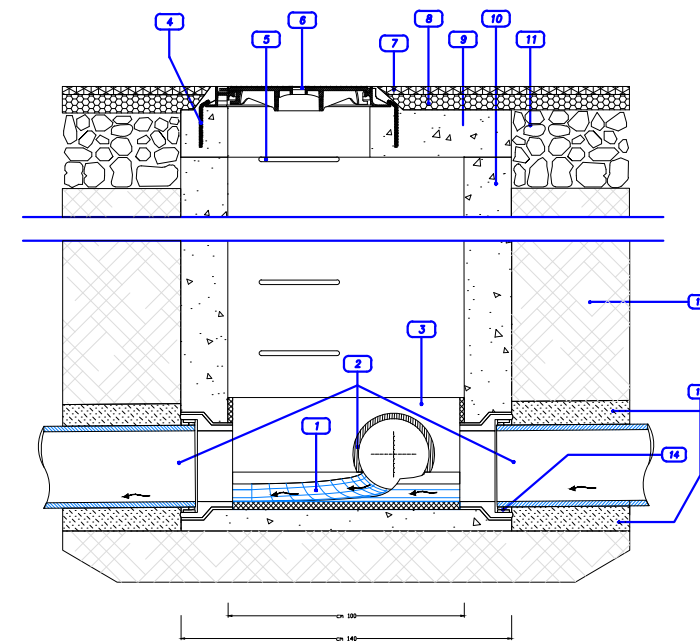
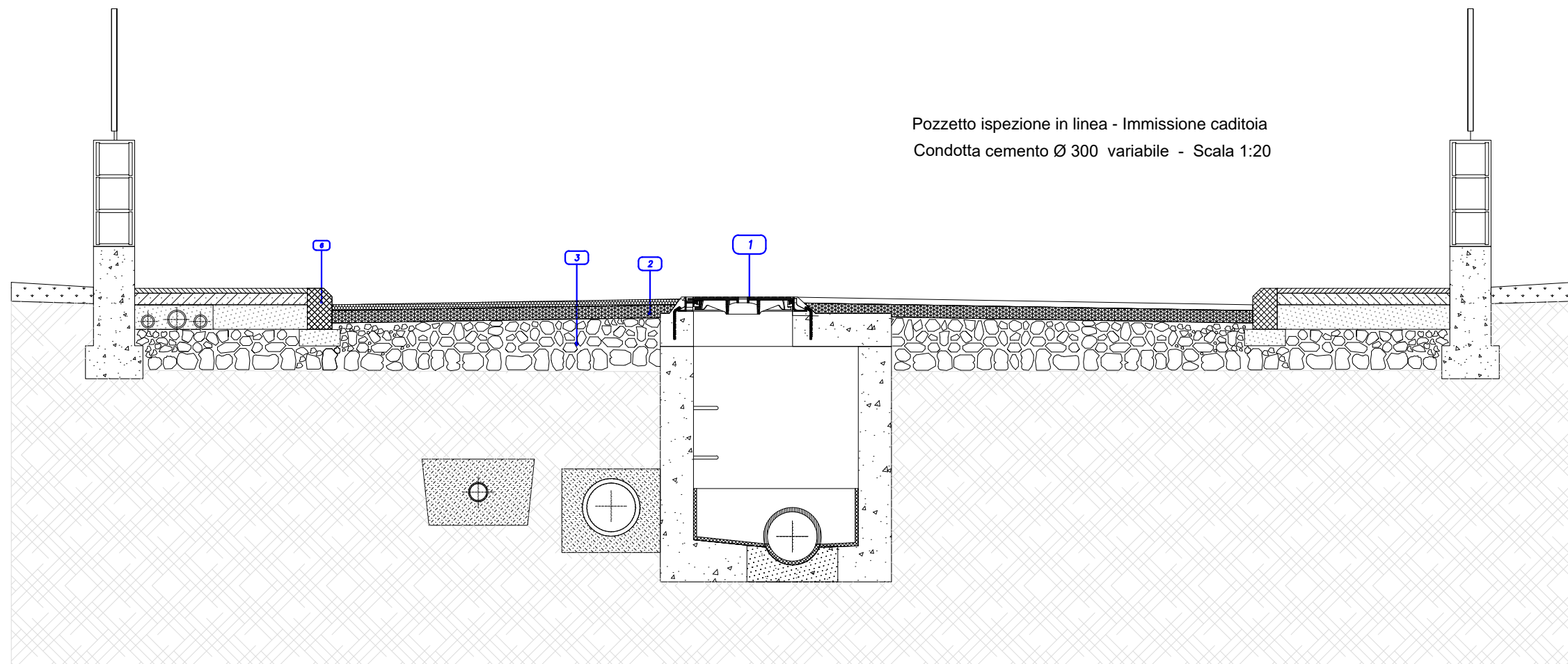
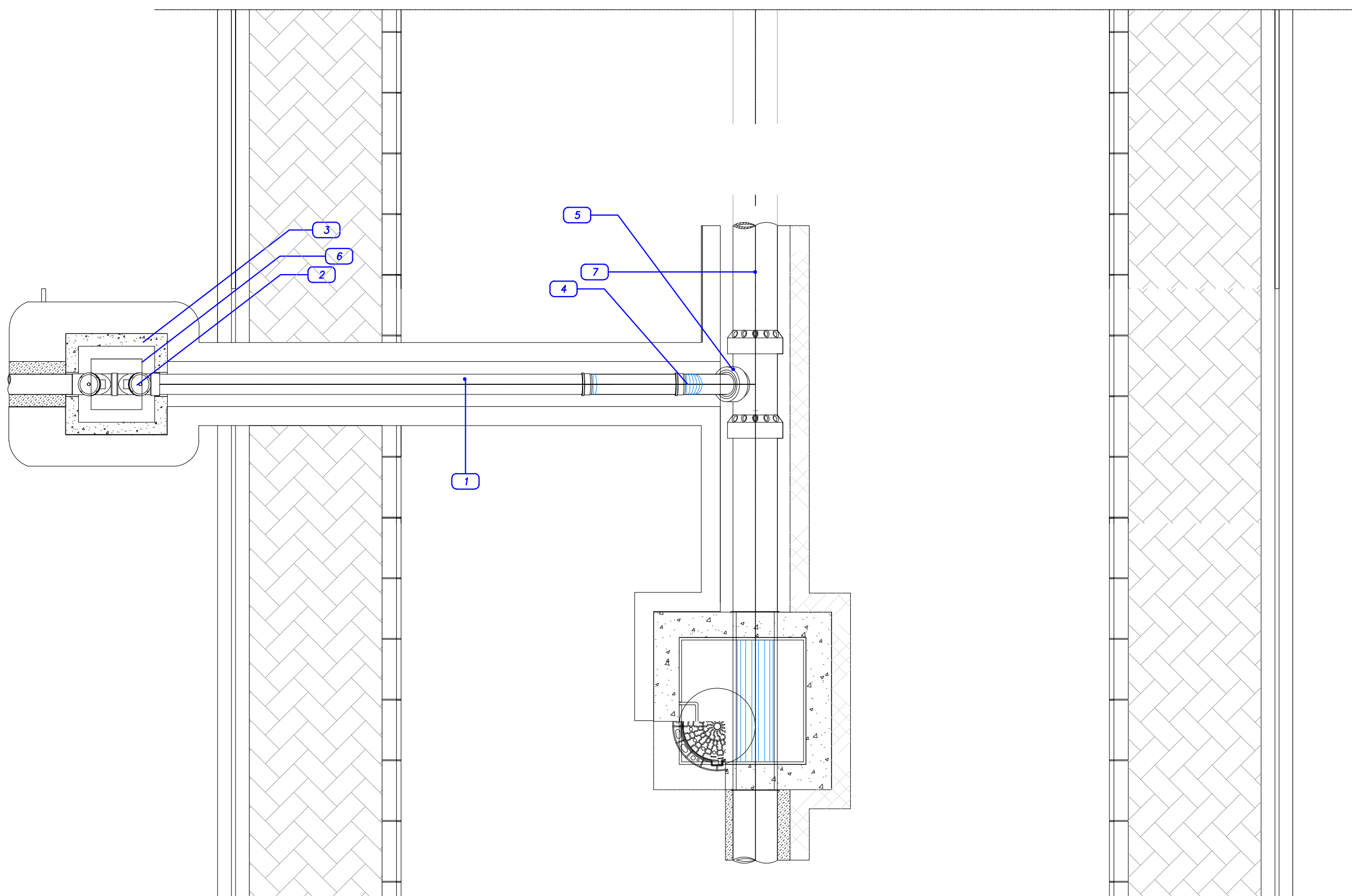
- 1 Tubo in PVC tipo SN – mm 110
- 2 Sifone in PVC – mm 150
- 3 Pozzetto pesante prefabbricato in cls
- 4 Curva in PVC – 45°
- 5 Braga in Gres 90° con diramazione DN 110
- 6 Chiusino
- 7 Collettore fognario gres DN 150

## PIANTE E SEZIONI STRADALI TIPO

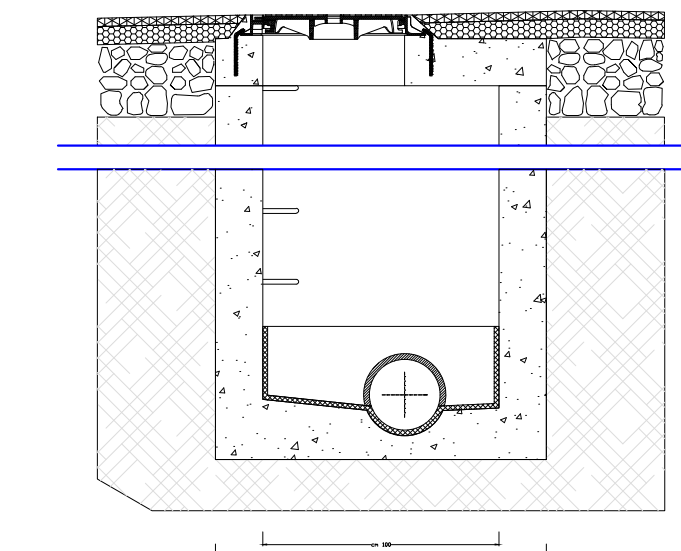
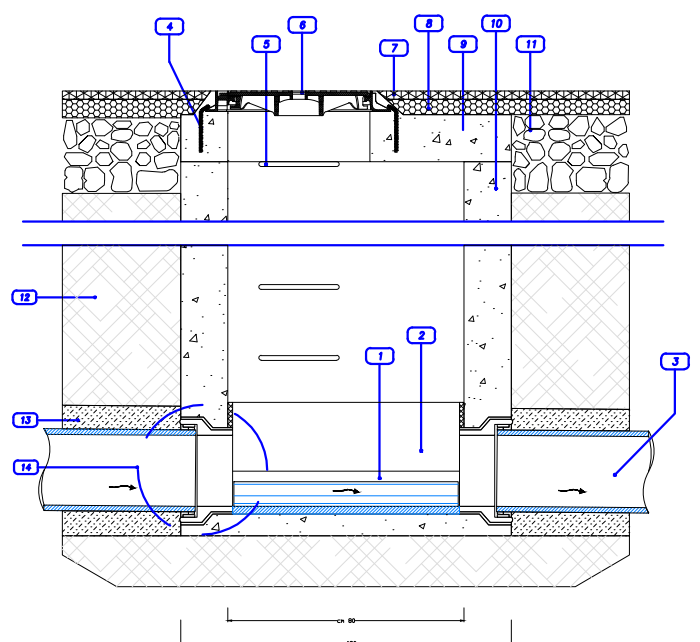
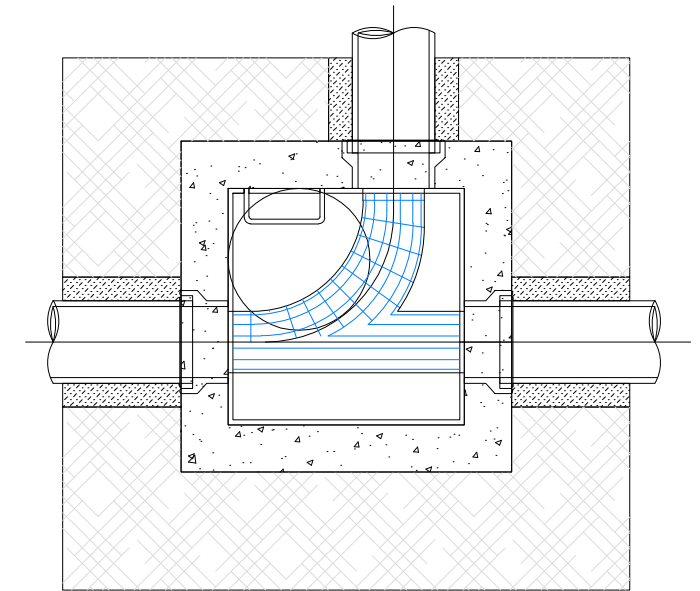
Scala 1:20



### Allacci privati

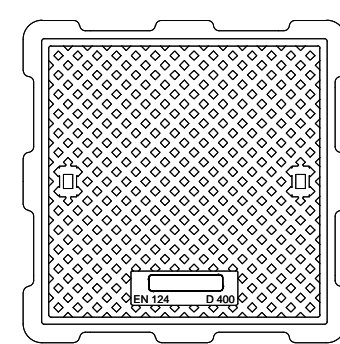
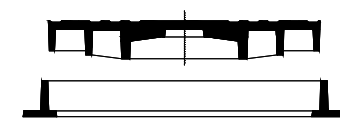


Pozzetto ispezione a tre vie - immissione  
Condotta PVC Ø 200



Pozzetto ispezione in linea  
Condotta pvc Ø 150 - Scala 1:20

- LEGENDA
- 1 Fondo fogna
  - 2 Tubi gres condotta fognaria Ø 200
  - 3 Trattamento impermeabilizzante
  - 4 Fissaggi in acciaio Ø 10/12 cm
  - 5 Gradino in acciaio rivestito in Polietilene
  - 6 Chiusino in ghisa D400 - Luce Ø 600 mm
  - 7 Manto d'usura
  - 8 Binder
  - 9 Solaio in CLS armato
  - 10 Pozzetto in CLS
  - 11 Fondazione stradale
  - 12 Rinterramento con materiali provenienti dagli scavi
  - 13 Sabbia vagliata
  - 14 Giunto elastico



D400 L070054-03  
Luce 540x540

COPERCHIO POZZETTI ISPEZIONE IN GHISA